

# How to use the OceanAdapt site – National Data

**RUTGERS** School of Environmental and Biological Sciences

**OceanAdapt**

HOME

NATIONAL DATA

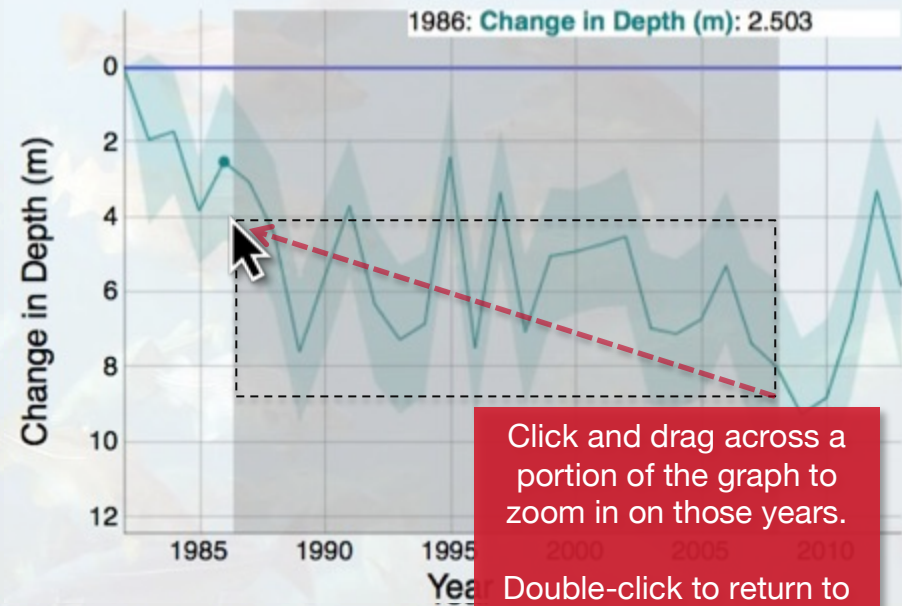
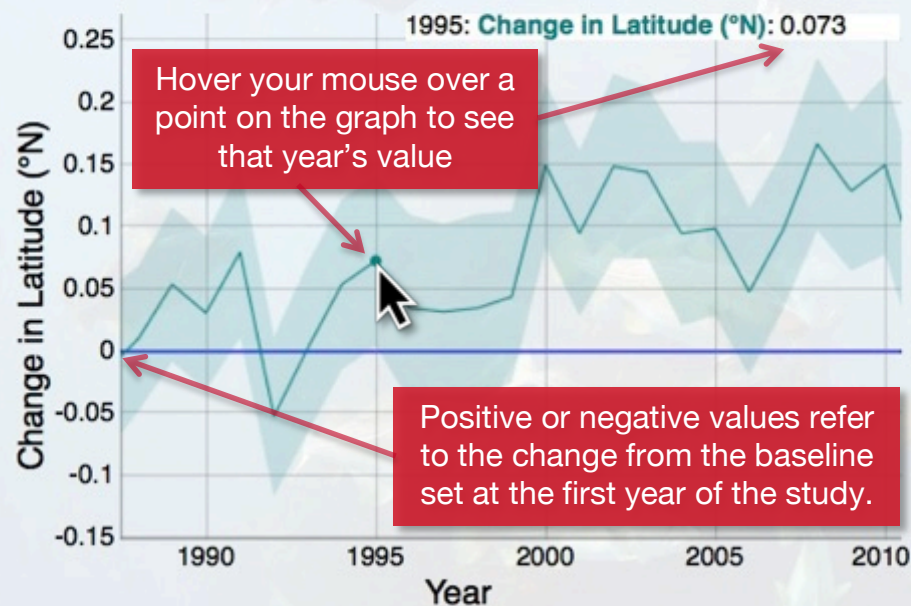
REGIONAL DATA

DOWNLOAD DATA

ABOUT

These lines indicate the average change in latitude and depth for 105 marine fish and invertebrate centers of abundance in the U.S., 1982 to 2013. Details of the calculation are explained [here](#).

VIEWS: **BOTH** | CHANGE IN LATITUDE | CHANGE IN DEPTH



When combined with information on changing temperatures in the oceans around North America, these data suggest that climate may be driving many marine fish and invertebrates to shift north and deeper. These shifts affect fisheries by changing where, when and which species can be caught.

Click and drag to zoom. Double click to zoom out.

# How to use the OceanAdapt site – Regional Data

**RUTGERS** School of Environmental and Biological Sciences

**OceanAdapt**

HOME

NATIONAL DATA

REGIONAL DATA

DOWNLOAD DATA

ABOUT

These graphs allow you to explore data on the distribution of marine animals in the U.S. For an individual species, the lines show the average latitude and depth through time for the center of its distribution. If all species in a region are selected, the lines show the average change across those species' distributions as compared to the initial year.

SELECT A REGION:

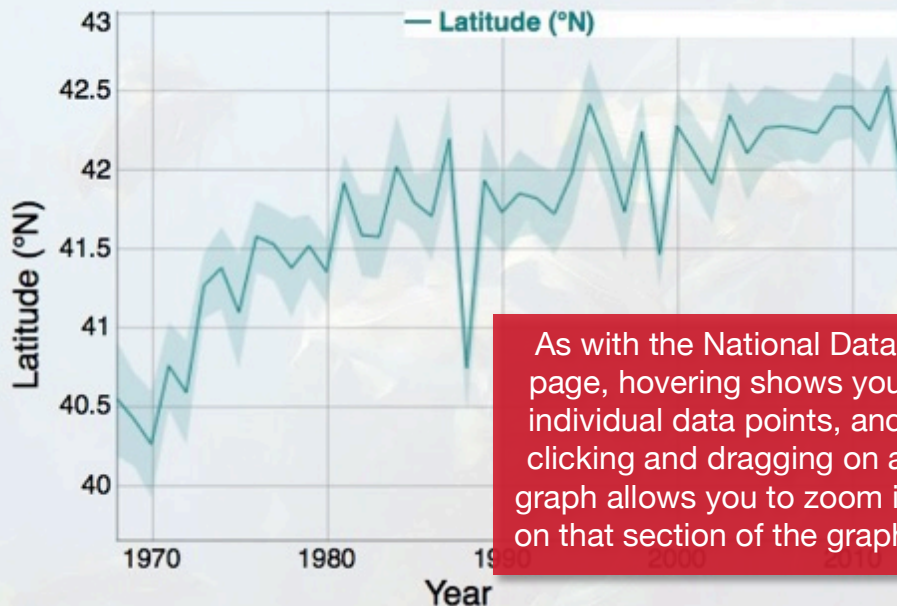
SHOW: ☐ SCIENTIFIC SPECIES NAME ☒ COMMON SPECIES NAME

SELECT A SPECIES (OPTIONAL):

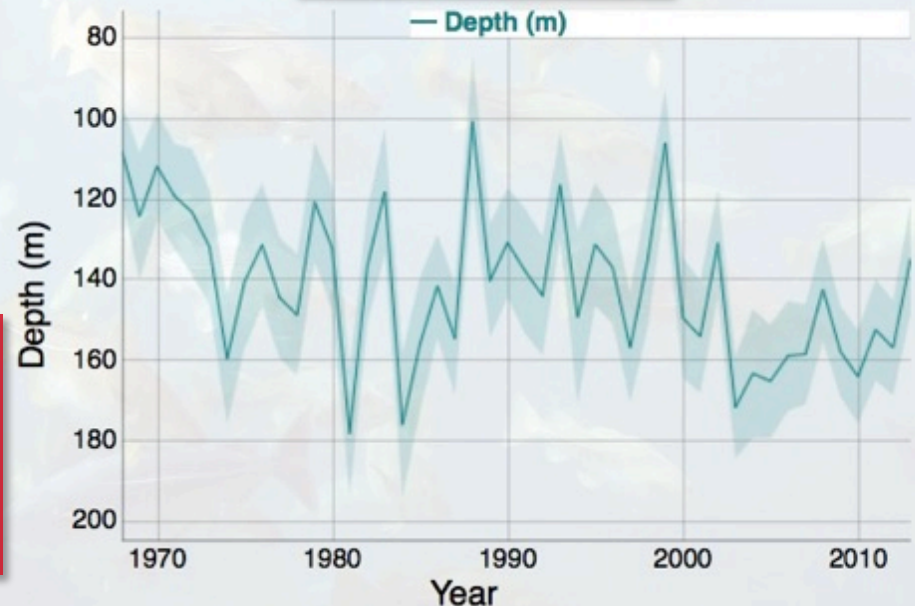
Using the dropdown menus, choose a region of interest and an individual species, sorted by scientific name or common name.



VIEWS: **BOTH** | CHANGE IN LATITUDE | CHANGE IN DEPTH



As with the National Data page, hovering shows you individual data points, and clicking and dragging on a graph allows you to zoom in on that section of the graph.





# How to use the OceanAdapt site – Download Data

RUTGERS

School of Environmental and Biological Sciences

OceanAdapt

HOME

NATIONAL DATA

REGIONAL DATA

DOWNLOAD DATA

ABOUT

## Data from Current Database

Select a region: All

Select all available data: ☐

Start Year: 1963

-OR-

End Year: 2014

Select data type: Processed Data

*Processed data are the centers of each species' distribution in each year. Raw data are the individual scientific survey data points that underlie those calculations.*

For Processed data, select variables to download:

Latitude: ☐

Longitude: ☐

Depth: ☐

DOWNLOAD DATA [\\*Fair Use Policy](#)

Select archived set: --

DOWNLOAD ARCHIVED DATA

*\*Note: Archived data might take a while to download depending on your connection.*

Using the dropdown menus, choose a region of interest and year range. Different regions have different amounts of available data, depending on when surveys began.

If you would like to download the R script that is used to generate the processed data from the raw data, please click below:

DOWNLOAD R SCRIPT

We have extensively processed the RAW data (standardizing species information and calculating annual population centers for each species) in order to allow others to more easily analyze it.

RAW data is the unprocessed information from each region (≈40 MB .zip file).

You are welcome to use this data for your research, but please see our Fair Use Policy for proper attribution / collaboration.